

# Quick Installation Guide

300Mbps Mini Wireless N USB Adapter

MODEL NO. TL-WN823N

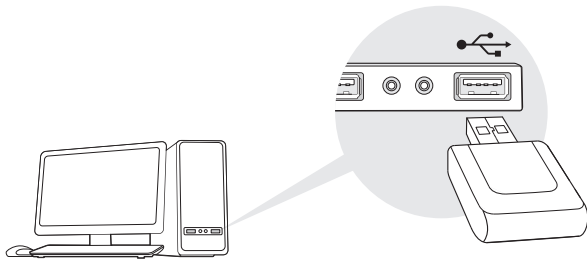
7106505078 REV3.0.0



For more information, please visit our website: <http://www.tp-link.com>

## 1 Connect to a Computer

Insert the adapter into a USB port on your computer directly.

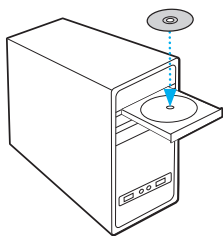


Note: In Windows XP, a Found New Hardware Wizard window will appear when the adapter is detected. Please click **Cancel**.

## 2 Install Driver and Utility

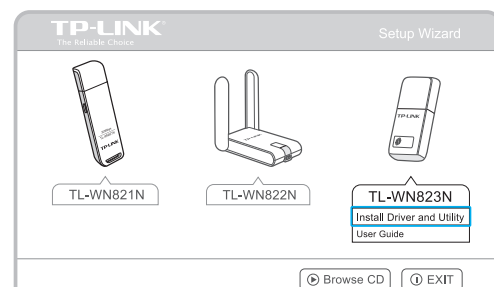
You can also download the driver and utility at [www.tp-link.com/](http://www.tp-link.com/)

**A:** Insert the CD and run the **Autorun.exe** from the pop-up Autoplay window.



Note: In some operating systems, the CD screen will pop up automatically. Otherwise, run the CD manually.

**B:** Select TL-WN823N and click **Install Driver and Utility**, then follow the InstallShield Wizard to complete the installation.

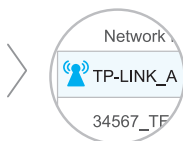
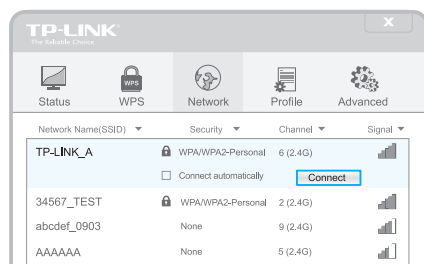


## 3 Join a Wireless Network

For Windows 8.1, TP-LINK Utility is not supported, please use the Windows built-in Wireless Utility to join a network.

### Option 1: Via TP-LINK Utility

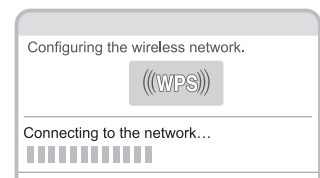
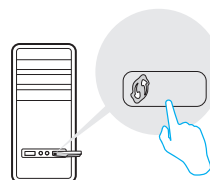
Select your preferred wireless network from the pop-up utility window and click **Connect**. The symbol  indicates a successful connection.



### Option 2: Via Wi-Fi Protected Setup (WPS)

**A:** Press the WPS button on your router.

**B:** Within 2 minutes, press and hold the WPS button on the adapter until the following screen appears.



**C:** When you are prompted "Successfully connected to the network by WPS!", click **OK**.

### Option 3: Via Windows Wireless Utility

With the TP-LINK Utility closed, you can use the Windows built-in Wireless Utility to join a wireless network.