



Quick Installation Guide

Tri-Band Wi-Fi 6 Router

Images may differ from actual product. ©2022 TP-Link 7106509665 REV1.0.0



Set up with videos:

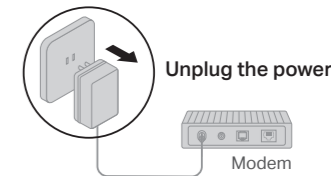
Scan QR code or visit <https://www.tp-link.com/support/setup-video/#wi-fi-routers>



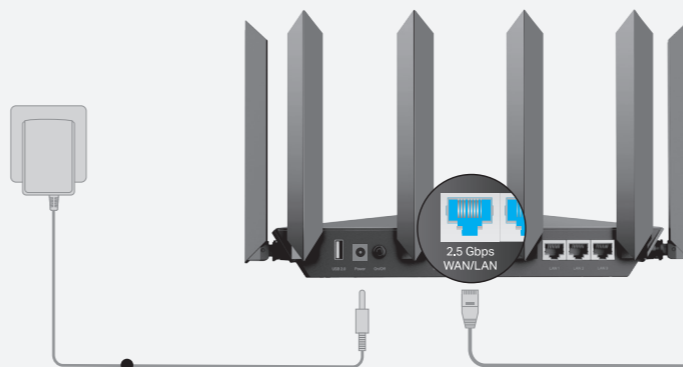
1 Connect the Hardware



- **Unplug the power** to turn off your modem, if any, and remove the backup battery if it has one.
- Refer to **Q5 of Need Help** to place the router for optimal Wi-Fi performance.

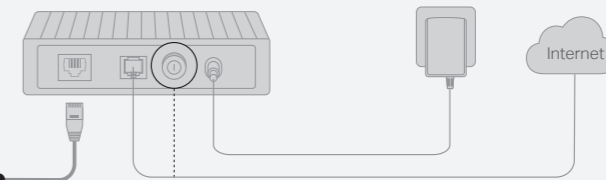


If your internet connection is through an Ethernet cable directly from the wall instead of through a DSL / Cable / Satellite modem, connect the Ethernet cable to the router's 2.5 Gbps WAN/LAN port and follow step 3 and 4 to complete the hardware connection.



1 Connect the **powered-off** modem to the **2.5 Gbps WAN/LAN** port with an Ethernet cable.

Note: If you want to use the 1 Gbps WAN/LAN port as the WAN port instead, please refer to **Q1 of Need Help** in this guide.



2 Power on the modem, and then wait about **2 minutes** for it to restart.

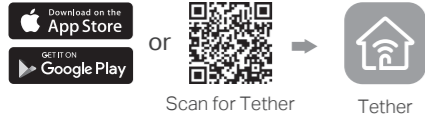
3 Connect the power adapter to the router and turn on the router.

4 Verify the LED is solid on (red or blue) before moving on.

2 Set Up the Network

Method ONE: Via TP-Link Tether App

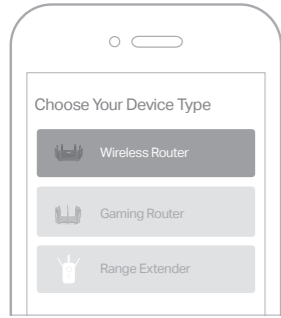
1. Download the Tether app.



2. Open the Tether app and log in with your TP-Link ID.

Note: If you don't have an account, create one first.

3. Tap the **+** button in the Tether app and select **Wireless Router > Standard Routers**. Follow the steps to complete the setup and connect to the internet.



😊 Enjoy the internet !

To enjoy a more complete service from TP-Link, bind your TP-Link ID to the router.

Method TWO: Via a Web Browser

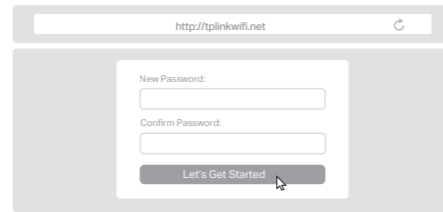
1. Connect your device to the router wirelessly or with an Ethernet cable.

The default wireless network names (SSIDs) and password are printed on the label at the bottom of the router.



2. Launch a web browser, and enter <http://tplinkwifi.net> or <http://192.168.0.1> in the address bar. Create a password to log in.

Note: If the login window does not appear, please refer to Q2 of **Need Help** in this guide.



3. Follow the step-by-step instructions to set up the internet connection and register for the TP-Link Cloud service.

😊 Enjoy the internet !

LED Explanation

LED	Description
Solid Orange	The Wi-Fi is off.
Pulsing Orange	The system is starting up.
Solid Red	No internet connection.
Pulsing Red	The Wi-Fi is off and there is no internet connection.
Solid Blue	The router is working properly.
Pulsing Blue	The firmware is being upgraded, WPS connection is being established or the router is being reset.

Button Explanation

Button	Description
WPS	Press the WPS button, and immediately press the WPS button on your client to start the WPS process.
Wi-Fi	Press and hold the Wi-Fi button for about 2 seconds to turn on or off the wireless function of your router.
LED	Press the LED button to turn on or off the LED of your router.

For technical support, replacement services, user guides and more, please visit <https://www.tp-link.com/support>

To communicate with TP-Link users or engineers, visit <https://community.tp-link.com> to join TP-Link Community.

Email techwriter@tp-link.com.cn to give suggestions.

- Do not attempt to disassemble, repair, or modify the device. If you need service, please contact us.
- Keep the device away from water, fire, humidity or hot environments.
- Do not use any other chargers than those recommended.
- Do not use damaged charger or USB cable to charge the device.
- Do not use the device where wireless devices are not allowed.
- Adapter shall be installed near the equipment and shall be easily accessible.



Need Help?



Q1. What should I do if I want to use 1 Gbps WAN/LAN port for internet service?

- Connect to the 1 Gbps WAN/LAN port with an Ethernet cable. During the quick network setup, select the 1 Gbps WAN/LAN port as the Internet port. Or after the network setup, you can go to **Tools > Internet Connection > Internet Port (Tether app) or Internet > Internet Port (web management page)** to change it.

Q2. What should I do if I can't access the web management page?

- Reboot your router and try again.
- If the computer is set to a static IP, change its settings to obtain an IP address automatically.
- Verify that <http://tplinkwifi.net> is correctly entered in the web browser. Alternatively, enter <http://192.168.0.1> or <http://192.168.1.1> in the web browser.
- Use another web browser and try again.
- Disable and enable the network adapter in use.

Q3. What should I do if I can't access the internet?

- Log in to the web management page of the router, go to **Internet > Internet Port**, and check if you selected the port that you've already plugged your Ethernet cable into.
- Power off your modem for about 5 minutes, then power it on and check the internet. If your modem has more than one Ethernet port, keep other ports unconnected.
- Check if the internet is working normally by connecting a computer directly to the modem via an Ethernet cable. If it is not, contact your internet service provider.
- Log in to the web management page, and go to the **Network Map** page to check whether the internet IP address is valid or not. If it's valid, go to **Advanced > Network > Internet**, click **Advanced Settings**, select **Use the Following DNS Addresses**, set the primary DNS to 8.8.8.8, and set the secondary DNS to 8.8.4.4. If it is not, check the hardware connection or contact your internet service provider.
- For cable modem users, log in to the web management page of the router and go to **Advanced > Network > Internet > MAC Clone**. Select **Clone Current Device MAC** and save the settings. Then reboot both the modem and the router.

Q4. What should I do if I forget my wireless password?

- If you have not changed the default wireless password, it can be found on the label at the bottom of the router.
- Connect a computer directly to the router using an Ethernet cable. Log in to the router's web management page at <http://tplinkwifi.net>, and go to the **Wireless** page to retrieve or reset your wireless password.

Q5. How should I position my router for optimal Wi-Fi performance?

- Don't place your router in a corner or in a closet.
- Avoid obstacles and high-powered appliances.
- Keep your router in a central location at a certain height.
- Keep the antennas vertical when the router is placed on a desktop. Keep the antennas upright when the router is hanging on a wall.