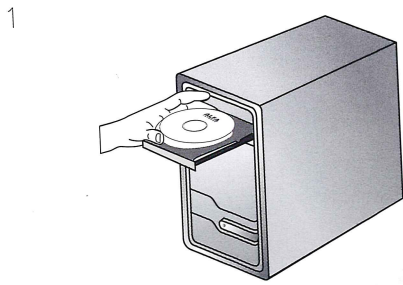


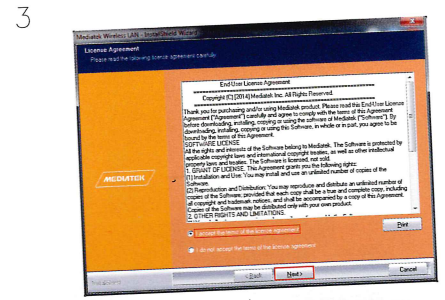
Please be aware that this quick-start guide is not intended to be a substitute for the User Manual. To become familiar with all the operating procedures and technical information, be sure to read all the information contained on the installation CD.



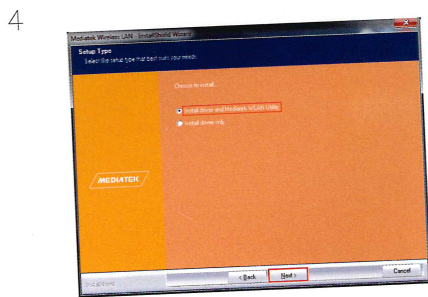
1 Insert the supplied CD into your computer's disc drive. The set up program should start automatically after a few seconds. If instruction does not appear, locate and double-click the setup.exe file on the CD.



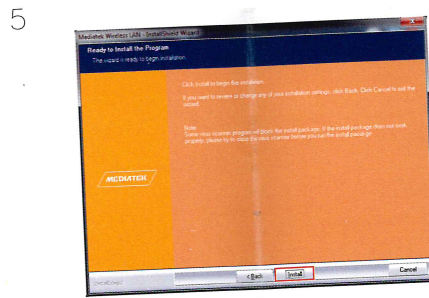
2 In driver selection menu, please browse to appropriate model and operation system, and click "Next" to start driver installation.



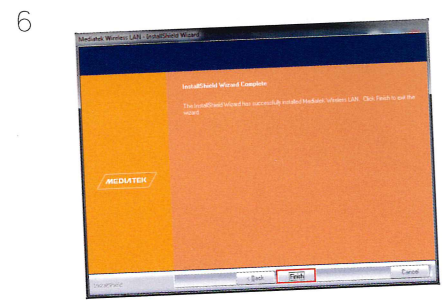
3 Read the license agreement and choose "I accept the terms of the license agreement" and click "Next".



4 Choose "Install driver and Mediatek WLAN Utility" and click "Next".



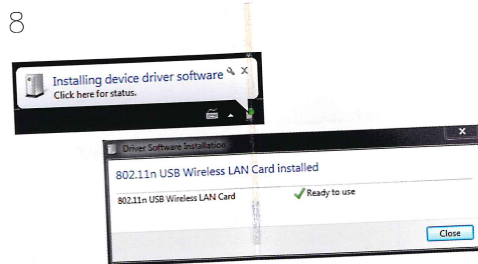
5 Click "Install" to continue.



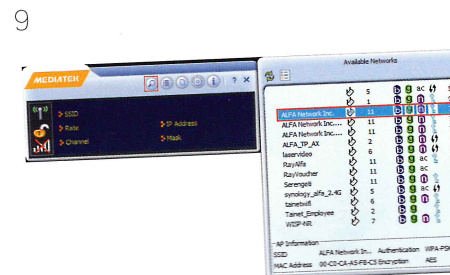
6 Click "Finish"



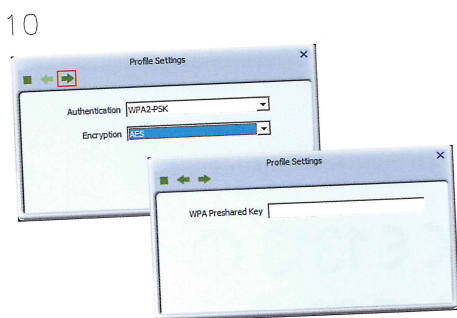
7 Attach the antenna to the wireless adapter then connect your PC with the USB cable. Your computer will then detect and activate the adapter automatically. Do not remove the CD from the computer.



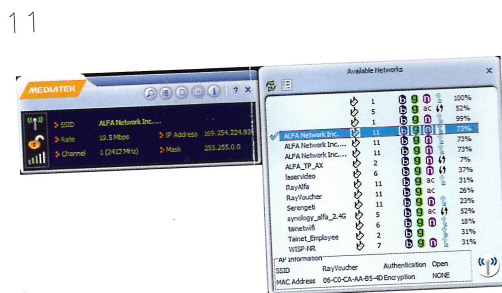
8 Found New Hardware pops up from the utility bar.



9 Select your target network and Click



10 Click "Next" then Insert the network security key



11 You will see symbol in front of the name of the network, it means you have successfully connected to your wireless network.



This product is suitable for all EU countr
ALFA Network Inc. © Copyrighted