



EdgeSwitch[®] XP

Advanced Power over Ethernet Switches

Models: ES-5XP, ES-8-XP, ES-16XP

Gigabit PoE Ports

Intuitive Configuration Interface

Advanced Switch Management Features



EdgeSwitch[®] XP

Advanced Gigabit PoE Managed Switch

Introducing the Advanced Power over Ethernet Switches, EdgeSwitch™ XP from Ubiquiti Networks.

EdgeSwitch XP delivers reliable passive PoE and fast 10/100/1000 Mbps connectivity to attached Ubiquiti devices and other devices that support passive PoE.

To connect your PoE devices, simply enable PoE in the easy-to-use EdgeSwitch XP Configuration Interface. Each port can be individually configured to provide PoE, so both PoE and non-PoE devices can be connected.

EdgeSwitch XP is available in multiple versions to meet your deployment needs.

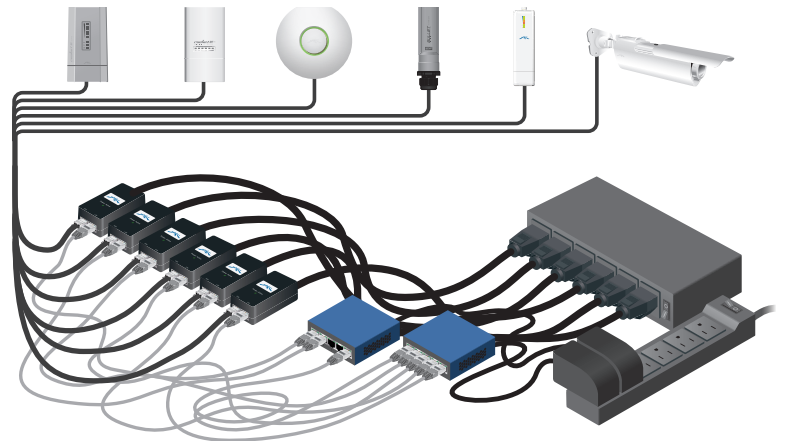
- EdgeSwitch 5XP is a cost-effective, 5-port Gigabit switch with 24V PoE support.
- EdgeSwitch 8XP is an industrial-strength, 8-port Gigabit switch with 150 watts of power capable of powering 24V or 48V devices. Output voltage is controlled by the software.
- EdgeSwitch 16XP features dual EdgeSwitch 8XP systems in a rack-mountable, 1U form factor with 300 watts of power supporting up to 16 devices.

Simplify Your Deployment

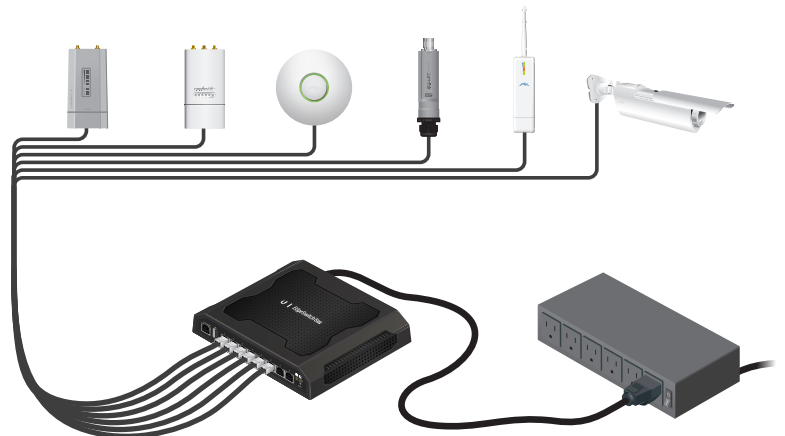
EdgeSwitch XP allows network architects to design cleaner, less cluttered deployments. For example, integrating one EdgeSwitch 8XP can eliminate the need for the following:

- 8 PoE adapters
- 8 power cords
- 8 power outlets
- 8 Ethernet patch cables

EdgeSwitch XP deployments increase efficiency and greatly reduce potential failure points – resulting in faster installations and less maintenance and troubleshooting.



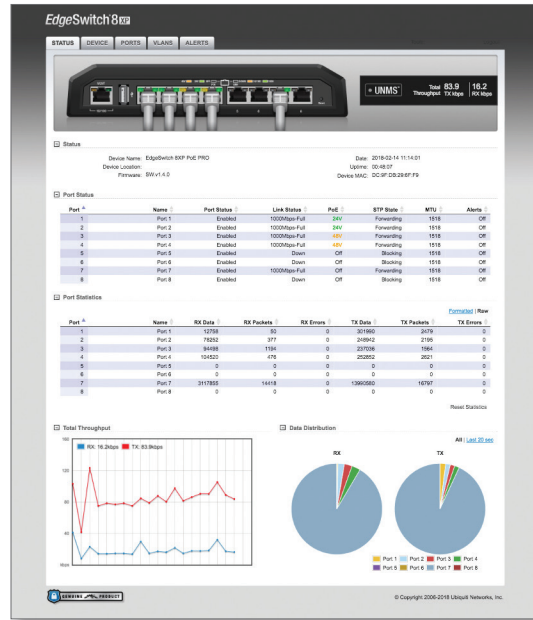
Deployment without EdgeSwitch XP



EdgeSwitch 8XP Deployment

Intuitive Configuration Interface

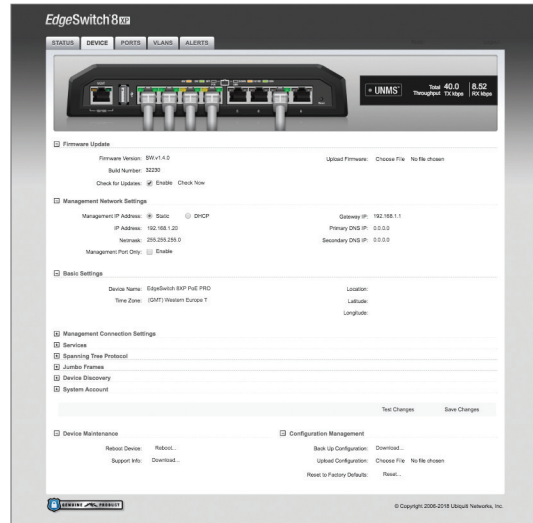
EdgeSwitch XP provides a user-friendly configuration interface designed for efficient setup and control. Accessed via a secured management port and web browser, the EdgeSwitch XP Configuration Interface provides intuitive management with a virtual view of the ports, showing physical connectivity, speed, and PoE status.



Advanced Features

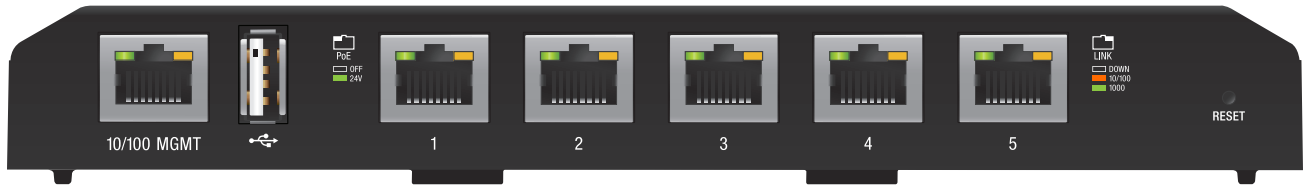
EdgeSwitch XP is loaded with a variety of advanced features, including:

- Port monitoring
- System connection and management services
- Virtual Local Area Network (VLAN) configuration
- Spanning Tree Protocol (STP)/ Rapid Spanning Tree Protocol (RSTP)
- Jumbo Frame Support
- Ping Watchdog
- Configurable alerts



Models

EdgeSwitch[®] 5 XP



Features:

- 5 Gigabit PoE Ports
- 24V Configurable Passive PoE
- EdgeSwitch XP Configuration Interface
- Wall-Mountable

EdgeSwitch[®] 8 XP



Features:

- 8 Gigabit PoE Ports
- 24V/48V Configurable Passive PoE
- 150 W Power
- EdgeSwitch XP Configuration Interface
- Tough Full Metal and Rubber Casing

EdgeSwitch[®] 16 XP



Features:

- 16 Gigabit PoE Ports
- 24V/48V Configurable Passive PoE
- 300 W Power
- EdgeSwitch XP Configuration Interface
- 1U Rack-Mount Form Factor

EdgeSwitch[®] 5XP

Specifications

ES-5XP	
Dimensions	197 x 87.5 x 27.3 mm
Weight	250 g
Power Input	24VDC, 2.5A Power Adapter (Included)
Max. Power Consumption	60 W
PoE Out Voltage Range	22-24VDC
Max. PoE Wattage Per Data Port	11.5 W
ESD Rating	24 kV Air / 24 kV Contact
PoE Method	Passive
Button	Reset
USB Port	2.0 Type A (Reserved for Future Use)
Processor	MIPS 24K, 400 MHz
System Memory	64 MB
Code Storage	8 MB
Certifications	CE, FCC, IC
Wall-Mount	Yes
Operating Temperature	-25 to 55°C (-13 to 131° F)
Operating Humidity	90% Non-Condensing

PoE Configurable Per Port	
Management Port	N/A
Data Ports	Off/24V

LEDs Per Port	
Management Port	Power /Link/Activity
Data Ports	PoE, Speed/Link/Activity

Networking Interfaces	
Management Port	(1) 10/100 Ethernet Port
Data Ports	(5) 10/100/1000 Ethernet Ports



Front Panel



Back Panel



Top View

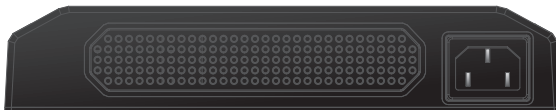
EdgeSwitch[®] 8XP

Specifications

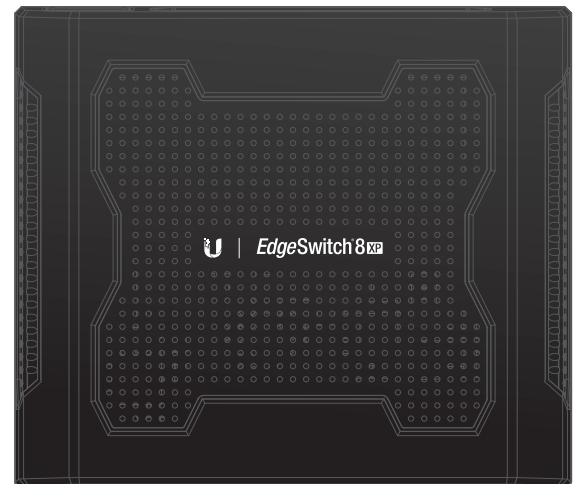
ES-8XP	
Dimensions	210 x 185 x 41 mm
Weight	1.24 kg
Power Input	110-120VAC / 210-230VAC
Max. Power Consumption	150 W
PoE Out Voltage Range	45-48VDC / 22-24VDC
Max. PoE Wattage Per Data Port	11.5 W (24 V), 23 W (48V)
ESD Rating	24 kV Air / 24 kV Contact
PoE Method	Passive
Button	Reset
USB Port	2.0 Type A (Reserved for Future Use)
Processor	MIPS 24K, 400 MHz
System Memory	64 MB
Code Storage	8 MB
Certifications	CE, FCC, IC
Operating Temperature	-25 to 55°C (-13 to 131° F)
Operating Humidity	90% Non-Condensing
PoE Configurable Per Port	
Management Port	N/A
Data Ports	Off/24V/48V
LEDs Per Port	
Management Port	Power/Link/Activity
Data Ports	PoE, Speed/Link/Activity
Networking Interfaces	
Management Port	(1) 10/100 Ethernet Port
Data Ports	(8) 10/100/1000 Ethernet Ports



Front Panel



Back Panel



Top View

EdgeSwitch[®] 16XP

Specifications

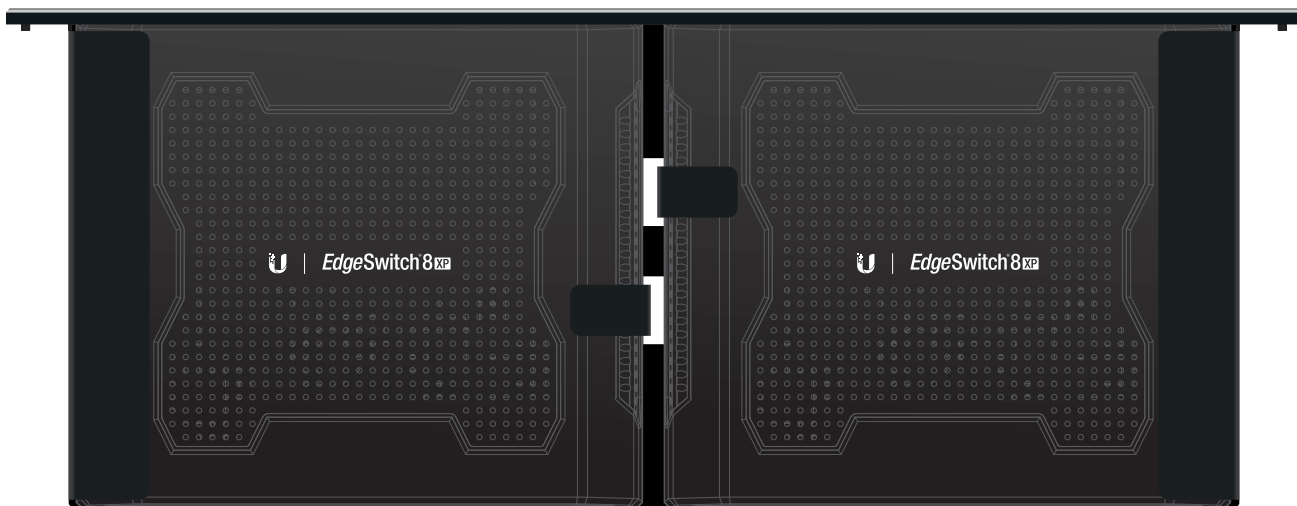
ES-16XP	
Dimensions	480 x 44.5 x 186 mm
Weight	3.95 kg
Hardware Configuration	(2) EdgeSwitch 8XPs
Mounting	Integrated 1U Rack-Mount



Front Panel



Back Panel



Top View

Specifications are subject to change. Ubiquiti products are sold with a limited warranty described at: www.ubnt.com/support/warranty
©2014-2018 Ubiquiti Networks, Inc. All rights reserved. Ubiquiti, Ubiquiti Networks, the Ubiquiti U logo, the Ubiquiti beam logo, EdgeMAX, EdgeRouter, EdgeSwitch, and UniFi are trademarks or registered trademarks of Ubiquiti Networks, Inc. in the United States and in other countries. All other trademarks are the property of their respective owners.