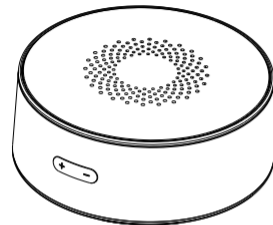
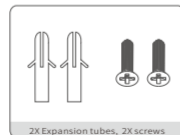
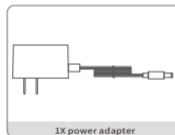


# Wireless Sound&Flash Alarm Siren User Manual



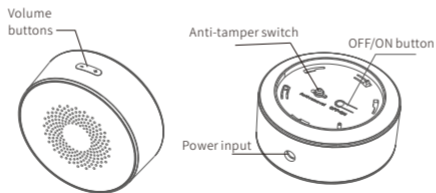
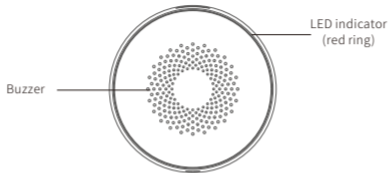
## Packing List

Check if the product is in good condition. Make sure it contains the below accessories.



## Appearance and Components

Product appearance

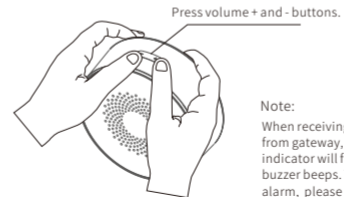


## Product Features

1. Sound&flash alarm for 100 dB.
2. Low voltage monitoring and indication function.
3. Periodically sends online reports to the gateway.
4. Anti-tamper design.
5. Wireless transmission, easy to install.
6. ABS material housing, radiation-resistant and heat-resistant.

## Power-On and External Power Supply

1. First time power on, LED is on for 3s.
2. When battery power, press the OFF/ON button for more than 3s to turn OFF/ON.
3. Network setting/exit setting: press both volume + and volume- at the same time for more than 5s.



Note:  
When receiving alarm signal from gateway, the status indicator will flash and the buzzer beeps. To clear the alarm, please operate on App.

## Basic Functions

1. Network setting: press the volume + and volume- buttons at the same time, the red light will be on for 5s. Release the button to set network, LED flashes for network setting. LED is always on for 3s then off. If failed, the LED will be off directly.
2. Volume adjustment: When the siren alarms, press the volume + and - to adjust.
3. Anti-tamper switch. When siren is removed, siren will alarm. To cancel the alarm, please press anti-tamper switch for 3 times, or operate on App.

## 4. LED Indicator

Power on/off: LED is on for 3s, buzzer beeps twice.

Low voltage: LED flashes every 20s.

Network setting: LED flashes.

Power off: Buzzer beeps once.

Network timeout: LED changes from flash to off.

Network setting success: LED is on for 3 seconds and off.

## Installation Position and Precautions

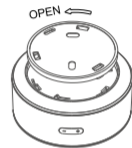
1. Install the product on an indoor tile, gypsum wall, or painted wood.
2. Building materials, such as reinforced concrete, will shorten the wireless communication distance.



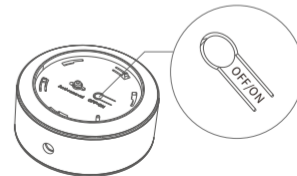
## Product Installation

Add the siren to the gateway as an accessory based on the gateway user manual.

1. Rotate the mounting base counterclockwise to remove it from the product.

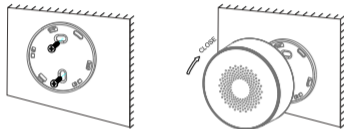


2. Power on the product.

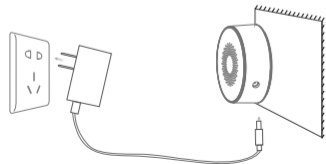


3. Use expansion tube and screws or a 3M sticker to fix the mounting base on a wall. Rotate the product clockwise into the mounting base.

If you use a 3M sticker, ensure that the installation surface is smooth and stable. Clean the surface before mounting to prevent the product from falling off.



4. Connect the siren to the power adapter.



### Technical Parameters

Wireless Technology	ZigBee
Working Voltage	12 V (power adapter)
Transmission Frequency	2.4 GHz
Working Temperature	-10°C to +55°C
Built-in Battery	3.7 V lithium battery
Standby Time	Over 24 hours
Relative Humidity	< 90%
Dimensions	Φ80 mm x 34.5 mm

### Toxic or Hazardous Substances or Elements of this Product

Component Name	Toxic or Hazardous Substances or Elements					
	Lead (Pb)	Mercury (Hg)	Cadmium (Cd)	Hexavalent chromium (Cr (VI))	Polybrominated biphenyls (PBBs)	Polybrominated diphenyl ethers (PBDEs)
LED	O	O	O	O	O	O
PCB	O	O	O	O	O	O
Cover and other components	O	O	O	O	O	O

This table complies with SJ/T 11364.

O: indicates that the toxic or hazardous substance amount contained in all homogeneous materials of a component does not exceed that stipulated in GB/T 26572.

X: indicates that the toxic or hazardous substance amount contained in at least one of the homogeneous materials of a component exceeds that stipulated in GB/T 26572.



### Warranty Certificate

Warranty policy:

1. If the product has quality problems within 7 days of the payment date, you can apply for a refund based on the invoice price or to replace with the same model or have it repaired.
2. If the product has quality problems within 15 days of the payment date, you can apply to replace the product with the same model or have it repaired.
3. If the product has quality problems within 12 months of the payment date, you can apply to have it repaired.

What is not covered under this warranty:

1. The product owner has no warranty certificate or the warranty service has expired.
2. Damage caused by improper use, maintenance, or storage
3. Damage caused by disassembly and repair without Tuya's authorization
4. Damage caused by force majeure
5. Normal discoloration and depreciation after the product has been used

### User Form

User information (Specify real information. Tuya promises to use the information only for after-sales services.)

Name \_\_\_\_\_

Phone number \_\_\_\_\_

Email \_\_\_\_\_

Zip code \_\_\_\_\_

Address \_\_\_\_\_

Product information

Name \_\_\_\_\_ Model \_\_\_\_\_

Color \_\_\_\_\_ Product SN \_\_\_\_\_

Service  Return  Replace  Repair

Fault symptoms \_\_\_\_\_

Handling date \_\_\_\_\_

Maintenance personnel signature \_\_\_\_\_

### Vendor Form

User information (Specify real information. Tuya promises to use the information only for after-sales services.)

Name \_\_\_\_\_

Phone number \_\_\_\_\_

Email \_\_\_\_\_

Zip code \_\_\_\_\_

Address \_\_\_\_\_

Product information

Name \_\_\_\_\_ Model \_\_\_\_\_

Color \_\_\_\_\_ Product SN \_\_\_\_\_

Service  Return  Replace  Repair

Fault symptoms \_\_\_\_\_

Handling date \_\_\_\_\_

Maintenance personnel signature \_\_\_\_\_