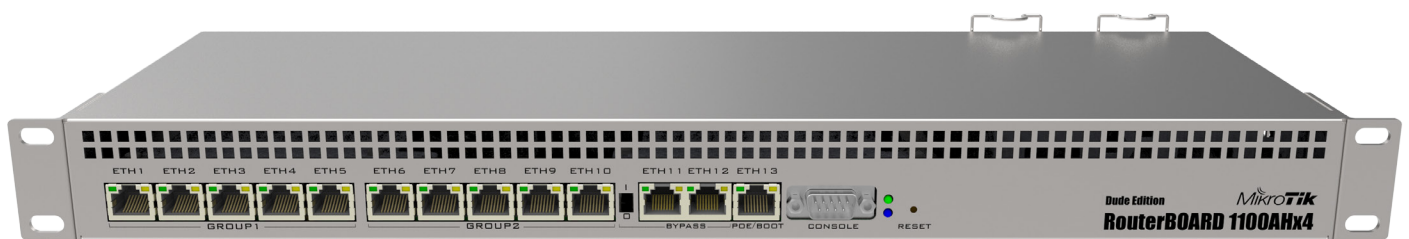


RB1100AHx4 series

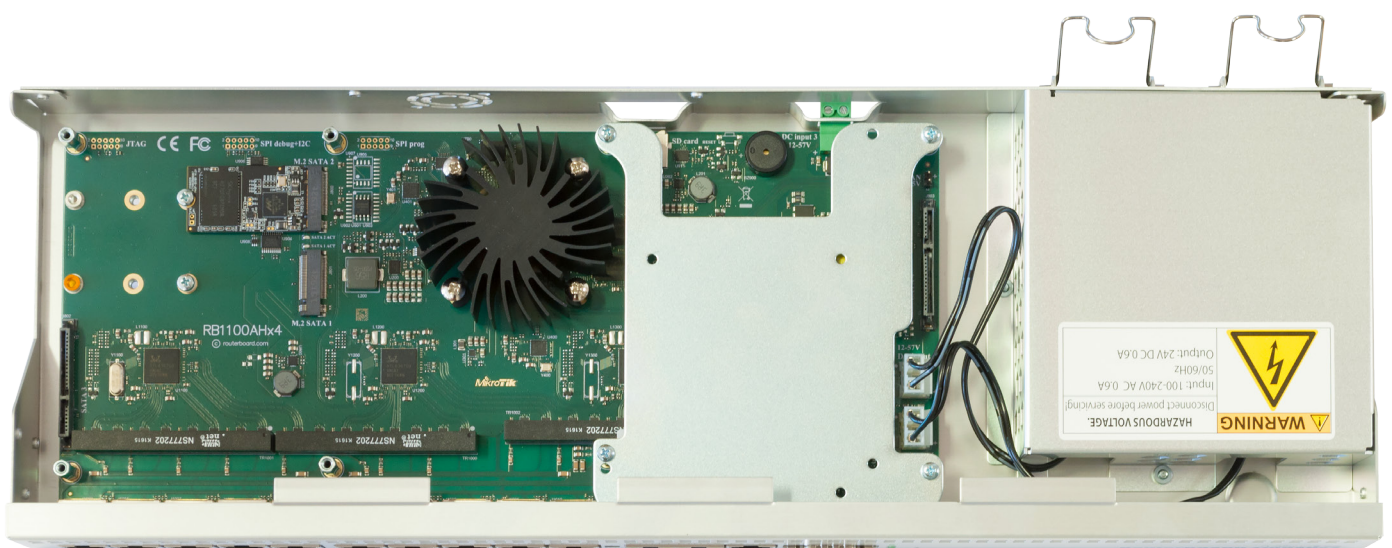
The new RB1100AHx4 series of devices uses a new quad core Cortex A15 chip from Annapurna labs, an Amazon company, The chip is clocked at 1.4 GHz, for a maximum throughput of up to 7.5 Gbit.

Two models are available, with the RB1100AHx4 Dude edition featuring several high speed storage connectors (two SATA and two M.2) for using a Dude database, proxy cache or any other storage intensive feature. The Dude edition includes a 60 GB M.2 drive already installed.



The devices support IPsec hardware acceleration and are faster at it than any previous RouterBOARD device.

The RB1100AHx4 feature two IEC failover power connectors, support 802.3at PoE input and also have a DC telecom power connector for -48 V DC powering.



Specifications

| | | |
|----------------------------|---|-------------------------------|
| Product code | RB1100AHx4 Dude edition | RB1100AHx4 |
| CPU | AL21400, 4 cores, 1.4G Hz | AL21400, 4 cores, 1.4 GHz |
| Size of RAM | 1 GB | 1 GB |
| Storage type | NAND | NAND |
| Storage size | 128 MB + 60 GB m.2 SATA 3 drive included | 128 MB |
| 10/100/1000 Ethernet ports | 13 | 13 |
| Ethernet bypass | Ethernet 11/12 | Ethernet 11/12 |
| Power jack | 2x IEC. 100 V - 240 V | 2x IEC. 100 V - 240 V |
| DC telecom power | 20 V - 57 V (-48 V supported) | 20 V - 57 V (-48 V supported) |
| PoE input | Passive, 802.3at. 20 V - 57 V | Passive, 802.3at. 20 V - 57 V |
| Redundant power supply | Yes | Yes |
| Voltage monitor | Yes | Yes |
| PCB temperature monitor | Yes | Yes |
| Current monitor | Yes | Yes |
| Dimensions | 444 x 148 x 47 mm | 444 x 148 x 47 mm |
| Operating system | RouterOS, level 6 license | RouterOS, level 6 license |
| Max Power consumption | 25 W | 20 W |
| microSD | 1 | 1 |
| SATA | 2x 2.5 inch SATA 3 | - |
| M.2 slots | 2x SATA 3 compatible (supports 2242, 2260 and 2280 sizes, M-key) | - |
| Serial port | RS232 | RS232 |
| Beeper | Yes | Yes |

