

Quick Installation Guide



LED Explanation

Power

On: The extender is on.
Flashing: The extender is starting up.
Off: The extender is off.

Signal

Solid blue: The extender is connected to your router's wireless network and is in a suitable location.
Solid red: The extender is experiencing poor signal strength. Try relocating it closer to your router.
Blinking: The extender is connecting to the router.
Off: No wireless connection has been established.

2.4GHz

On: The extender is connected to the 2.4GHz wireless network of your host router.
Off: The extender isn't connected to the 2.4GHz wireless network of your host router.

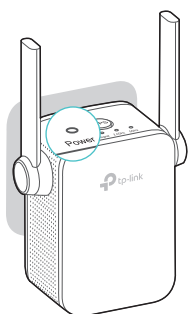
5GHz

On: The extender is connected to the 5GHz wireless network of the host router.
Off: The extender isn't connected to the 5GHz wireless network of the host router.

Option ONE Quick Setup Using Your Web Browser

1 Power on

Plug your extender into a power outlet near your router.

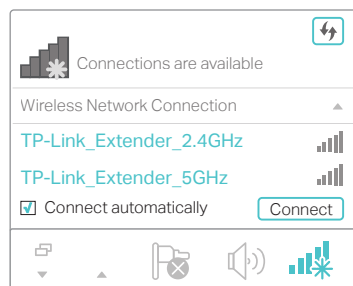


Wait until the Power LED is solid on.

2 Connect to the Extender

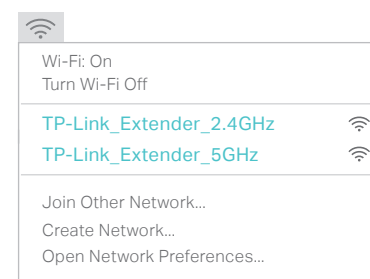
The extender's default network is TP-Link_Extender_2.4GHz/5GHz or TP-LINK_Extender_2.4GHz/5GHz.

For Windows Users



1. Unplug the Ethernet cable from your computer (if any).
2. Click the Wi-Fi icon on the taskbar and connect to the extender's default network.

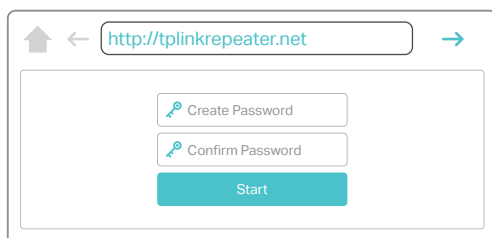
For Mac OS X Users



1. Unplug the Ethernet cable from your Mac (if any).
2. Click the Wi-Fi icon in the top right corner of the screen and connect to the extender's default network.

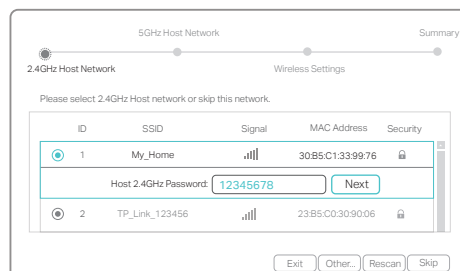
3 Configure

1. Launch a web browser, and enter <http://tplinkrepeater.net> or <http://192.168.0.254> in the address bar. Create a password for future login attempts, and click **Start**.



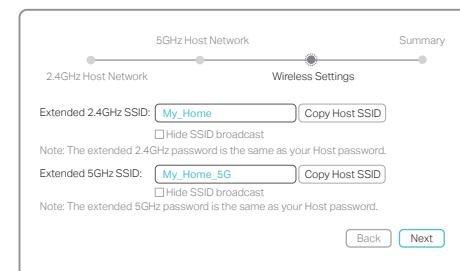
! If the login window does not appear, please refer to the [FAQ > Q1](#).

2. Select your router's 2.4GHz/5GHz host network, enter its password, and then click **Next**.



! If your router does not support 5GHz wireless network, please click **Skip** to continue.

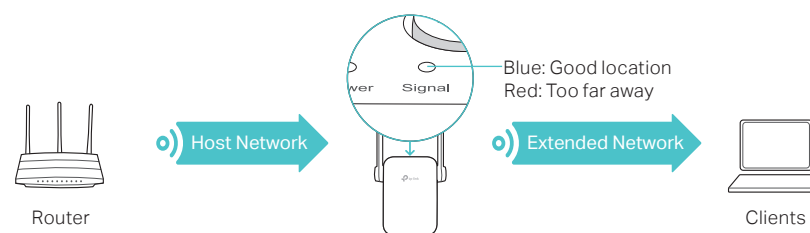
3. Either keep the default SSIDs or customize them for the extended networks, and then click **Next**.



4. Verify your wireless settings and click **Save**. The corresponding LED(s) (2.4GHz/5GHz) should turn solid on.

4 Relocate

1. Plug in the extender about halfway between your router and the Wi-Fi dead zone. The location you choose must be within the range of the host network.
2. Wait until the Signal LED turns solid blue. If not, relocate it closer to the router to achieve better signal quality.



Both extended networks share the **same Wi-Fi passwords** as those of your host networks, but may have **different wireless network names (SSIDs)** if you have customized them during the configuration.

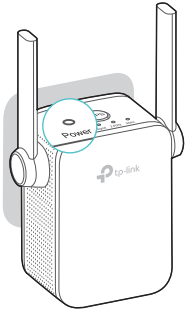
Option TWO Quick Setup Using the WPS Button

WPS is an easier way to extend your host network. You are recommended to use this way if your host router has a WPS button.

The button might look like one of these:   . Otherwise, please use Option ONE.

1 Power on

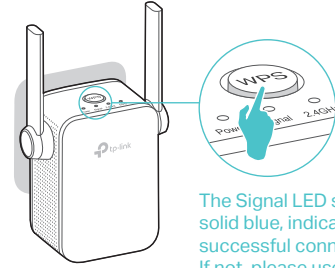
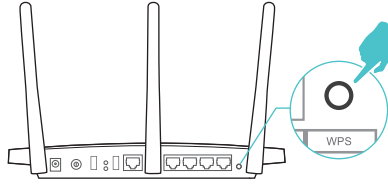
Plug the extender into a power outlet near your router.



Wait until the Power LED is solid on.


2 Connect

1 Press the WPS button on your router, and then press the WPS button on your extender within 2 minutes.



The Signal LED should turn solid blue, indicating successful connection. If not, please use Option ONE.

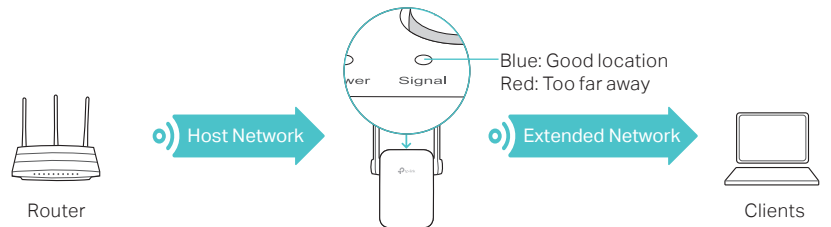
2 If you are connecting the extender to a dual band router but only the 2.4GHz or 5GHz LED is on, repeat Step 1 to connect to the other band.

-  1. Some ISP gateways disable the WPS function by default. If the WPS method fails, please refer to Option ONE.
2. For more information about using WPS on your router, please refer to the router manufacturer's user guide.

3 Relocate

1 Plug in the extender about halfway between your router and the Wi-Fi dead zone. The location you choose must be within the range of the host network.

2 Wait until the Signal LED turns solid blue. If not, relocate it closer to the router to achieve better signal quality.



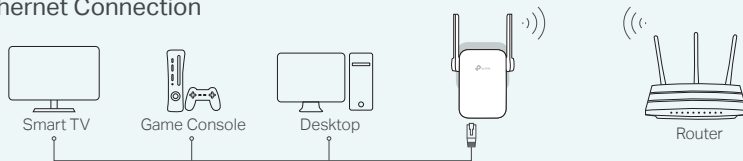
 **Enjoy!** Both extended networks share the same wireless network names (SSIDs) and passwords as those of your host networks.

Entertainment Adapter

The extender can be used as a wireless adapter to connect any Ethernet-only device such as a Blu-ray player, game console, DVR, or smart TV to your Wi-Fi network.

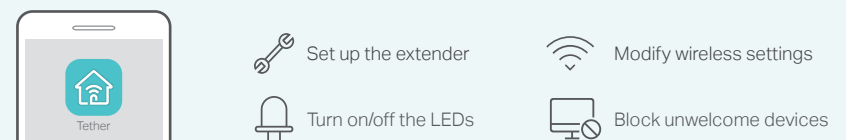
First, connect the extender to your router using Option ONE or Option TWO. Then connect your Ethernet-only device to the extender via an Ethernet cable.

Ethernet Connection



TP-Link Tether App

Tether provides a simple, intuitive way to access and manage your extender with your iOS or Android devices.



How to begin?

1. Download the Tether app from the App Store or Google Play.
2. Ensure your device is wirelessly connected to the extender or to the host router.
3. Launch the app and start managing your extended network.



Scan to download

FAQ(Frequently Asked Questions)

Q1. What should I do if I can't access the web management page of the extender?

- If your computer is wirelessly connected, make sure that you have connected to the extender's SSID; if your computer is connected via an Ethernet cable, make sure that the connection is stable.
- Make sure your computer is set to obtain an IP address and DNS server address automatically.
- Verify that <http://tplinkrepeater.net> or <http://192.168.0.254> is correctly entered in the web browser and press Enter.
- Reset the extender and try again.

Q2. How do I reset the extender?

- With the extender powered on, use a pin to press the RESET button. The LEDs should turn off momentarily, and then release the button.

Q3. Why doesn't the Signal LED turn solid blue (or red) after I completed Option ONE?

- You may have entered the incorrect Wi-Fi password of your host network during the configuration. Please log in to the extender's web management page to check the password and try again.
- Reset the extender and go through the configuration again.

Q4. I enabled a wireless MAC filter, wireless access control, or access control list (ACL) on my router, what should I do before configuring and using the extender?

- If you have enabled those features of your host router, you may need to disable them first, and then follow Option ONE or Option TWO to complete the configuration.