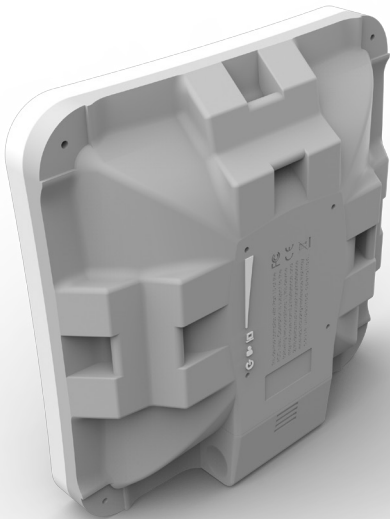


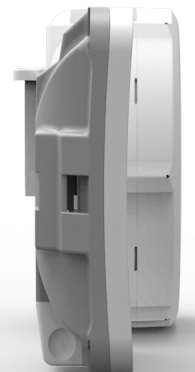
SXTsq Lite5

The SXTsq Lite5 is a compact and lightweight outdoor wireless device with an integrated antenna. Perfect for point-to-point links of up to 12 kilometers or as a CPE unit. It is compact, weatherproof and easy to mount. The SXTsq Lite5 retains a 16dBi antenna like the SXT Lite5, our previous model, yet the antenna design has been improved and the physical size has been dramatically reduced - the SXTsq is two times thinner.



The enclosure includes slots for directly attaching a hose clamp mount in three different mounting places, with ability to be mounted on horizontal railings. The device includes one 10/100Mbit ethernet port. There is also an easily accessible grounding connection to protect it against lightning.

Comparison to previous SXTs



24V 0.38A Power adapter



Metal ring



PoE injector

Specifications

Product code	RBSXTsq5nD (International), RBSXTsq5nD-US (USA)		
CPU	AR9344		
CPU nominal frequency	600 MHz		
CPU core count	1		
Size of RAM	64 MB		
Storage	16 MB Flash		
10/100 Ethernet ports	1		
Wireless bands	5 GHz radio		
Operating frequency	International	5150 - 5875 MHz	
	USA	5170 - 5250 MHz 5725 - 5835 MHz	
Protocols	802.11a/n		
Chains	2		
Antenna gain	16 dBi		
Antenna beam width	23°		
Wireless chip model	AR9344		
PoE in	Yes		
Supported input voltage	10 V - 30 V, passive PoE		
Dimensions	129x129x34 mm; package: 255x180x45 mm		
Weight	Unit: 295 g; package: 492 g		
Operating temperature	-40 to 70° C		
License level	3		
Operating System	RouterOS		
Max Power consumption	6 W		

Wireless specifications

RATE (5 GHz)	Tx (dBm)	Rx (dBm)
6MBit/s	25	-96
54MBit/s	20	-80
MCS0	25	-96
MCS7	19	-75

QuickMount Pro adjustable mount available separately.

