

Fiber

SFP/SFP+ Modules and Cabling

Models: UF-MM-1G, UF-MM-10G, UF-SM-1G-S,
UF-SM-10G, UF-SM-10G-S, FiberCable

Single-Mode or Multi-Mode Compatibility

1 Gbps Using SFP or 10G Speeds Using SFP+

BiDi Models for Reuse of Existing Infrastructure

FiberModule™

Overview

Ubiquiti Networks offers a variety of U Fiber™ modules to suit your fiber connectivity applications.

Two multi-mode models are available:

- UF-MM-1G: SFP, 1 Gbps
- UF-MM-10G: SFP+, 10 Gbps

Three single-mode models are available:

- UF-SM-1G-S: SFP, 1 Gbps, BiDi
- UF-SM-10G: SFP+, 10 Gbps
- UF-SM-10G-S: SFP+, 10 Gbps, BiDi

Indoor Runs

For convenient multi-mode connections that extend beyond the 100-meter limitation of Ethernet cabling, use the UF-MM-10G for distances of up to 300 m and speeds of up to 10 Gbps, or use the UF-MM-1G for distances of up to 550 m and speeds of up to 1 Gbps.

Outdoor Use

For long-distance single-mode runs, use the UF-SM-10G for distances of up to 10 km at 10 Gbps, or use the UF-SM-1G for distances of up to 3 km at 1 Gbps. To protect DC power and fiber, deploy EdgePoint™ with EdgePower™.

Deploy a BiDi (BiDirectional) model, UF-SM-1G-S or UF-SM-10G-S, to maximize re-use of existing infrastructure. You must deploy a BiDi model as a paired set of modules because the pair uses two different wavelengths, upstream and downstream, on a single fiber.

Fiber Routing and Switching

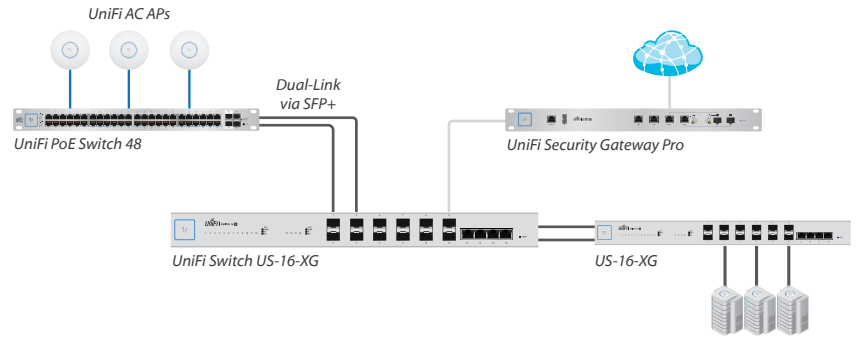
Ubiquiti offers EdgeRouter™ models with SFP port(s) and multiple fiber switch options to suit your specific network infrastructure:

| | US-16-XG* | ES-16-XG | ES-12F |
|----------------|-----------|----------|--------|
| 10G | ✓ | ✓ | |
| 1G | ✓ | ✓ | ✓ |
| UniFi® | ✓ | | |
| Fiber to the X | | ✓ | ✓ |

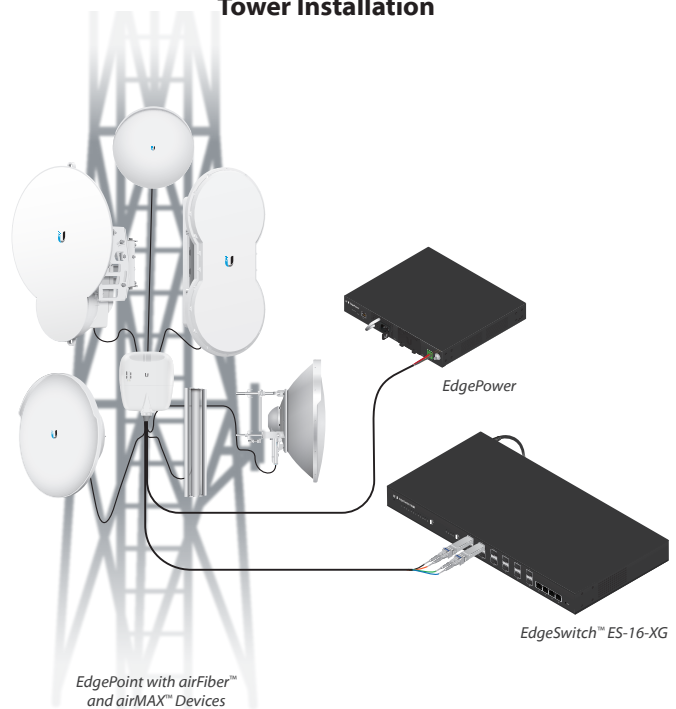
* US-16-XG ships in volume in Dec 2016.

Application Examples

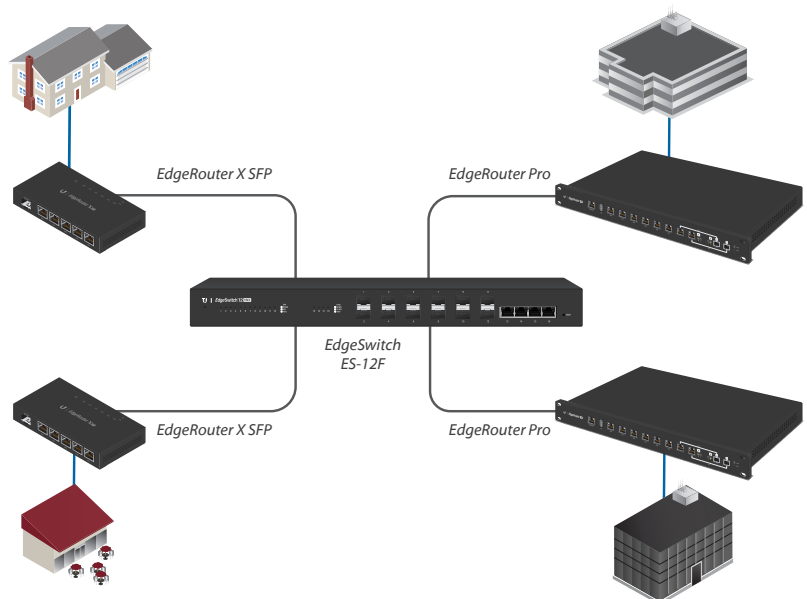
UniFi Site



Tower Installation



Fiber to the X Deployment



FiberModule™

Model Comparison



| | UF-MM-1G | UF-MM-10G | UF-SM-1G-S | | UF-SM-10G | UF-SM-10G-S | |
|-----------------------|------------------------------|------------------------------|------------------------------|---------|------------------------------|------------------------------|---------|
| Supported Media | Multi-Mode Fiber | Multi-Mode Fiber | Single-Mode Fiber | | Single-Mode Fiber | Single-Mode Fiber | |
| Connector Type | (2) LC | (2) LC | (1) LC | | (2) LC | (1) LC | |
| BiDi | | | ✓ | | | ✓ | |
| TX Wavelength | 850 nm | 850 nm | Blue | Yellow | 1310 nm | Blue | Red |
| | | | 1310 nm | 1550 nm | | 1270 nm | 1330 nm |
| RX Wavelength | 850 nm | 850 nm | Blue | Yellow | 1310 nm | Blue | Red |
| | | | 1550 nm | 1310 nm | | 1330 nm | 1270 nm |
| Data Rate | 1.25 Gbps SFP | 10 Gbps SFP+ | 1.25 Gbps SFP | | 10 Gbps SFP+ | 10 Gbps SFP+ | |
| Cable Distance | 550 m | 300 m | 3 km | | 10 km | 10 km | |
| Operating Temperature | 0 to 70° C (32 to 158° F) | 0 to 70° C (32 to 158° F) | 0 to 70° C (32 to 158° F) | | 0 to 70° C (32 to 158° F) | 0 to 70° C (32 to 158° F) | |
| Pack Options | 2-Pack, 20-Pack | 2-Pack, 20-Pack | 1-Pair, 10-Pairs | | 2-Pack, 20-Pack | 1-Pair, 10-Pairs | |

FiberCable™

Models: FC-SM-100, FC-SM-200, FC-SM-300

Single-Mode LC Fiber Cable

Build your outdoor fiber network using our FiberCable. Lightweight and flexible, FiberCable is ideal for tower deployments of our outdoor routing and switching products, such as EdgePoint. Available in 100, 200, and 300 ft lengths.

- Outdoor-Rated Jacket with Ripcord
- Integrated Weatherproof Tape
- Kevlar Yarn for Added Tensile Strength
- Outer Diameter of Cable: 6.0 ± 0.2 mm
- Six-Strand Single-Mode (G.657.A2)
- Outer Diameter of Fiber Strand: 0.25 mm Nominal
- Insertion Loss
 - 1310 nm: ≤0.5 dB/km
 - 1550 nm: ≤0.5 dB/km



Specifications are subject to change. Ubiquiti products are sold with a limited warranty described at: www.ubnt.com/support/warranty
 ©2017 Ubiquiti Networks, Inc. All rights reserved. Ubiquiti, Ubiquiti Networks, the Ubiquiti U logo, the Ubiquiti beam logo, airFiber, airMAX, airOS, EdgePoint, EdgePower, EdgeSwitch, FiberCable, U Fiber, and UniFi are trademarks or registered trademarks of Ubiquiti Networks, Inc. in the United States and in other countries. All other trademarks are the property of their respective owners.