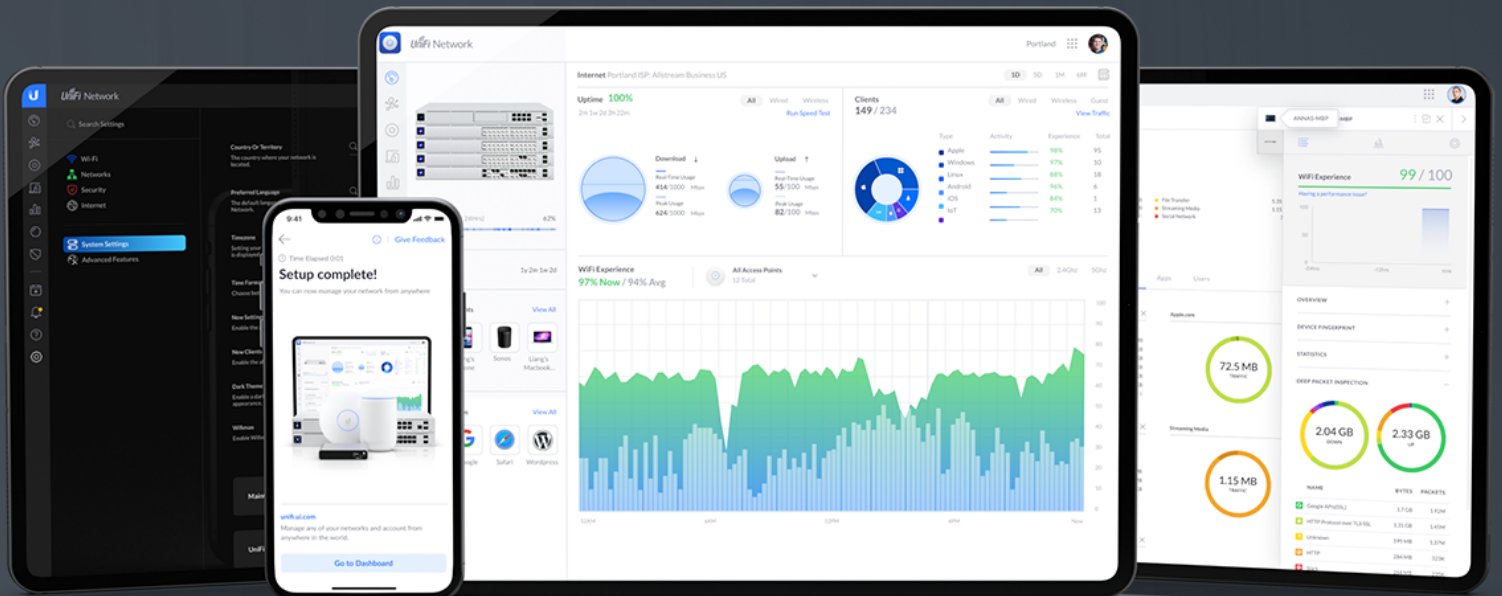




# Datasheet UACC-OM-SM-10G-D/10G-S/1G-S



# Single-mode Optical Module

## UACC-OM-SM-10G-D:

Single-mode, duplex, fiber transceiver module.

The 10 Gbps Single-mode Optical Module is a duplex transceiver that delivers up to 10 Gbps speed over distances up to 10 kilometers.

## UACC-OM-SM-10G-S:

Single-mode, simplex, fiber transceiver module.

The 10 Gbps Bidirectional Single-mode Optical Module is a simplex transceiver that delivers up to 10 Gbps speed over distances up to 10 kilometers.

## UACC-OM-SM-1G-S:

Single-mode, simplex, fiber transceiver module.

The 1 Gbps Bidirectional Single-mode Optical Module is a simplex transceiver that delivers up to 1.25 Gbps speed over distances up to 3 kilometers.



## UACC-OM-SM-10G-D

Supported Media	Single-Mode Fiber
Connector Type	(2) LC
BiDi	No
TX Wavelength	Blue Latch: 1310 nm
RX Wavelength	Blue Latch: 1310 nm
Data Rate	10 Gbps
Max. Power Consumption	1W
Cable Distance	10 km
Operating Temperature	0 to 70° C (32 to 158° F)
Pack Options	2-pack, 20-pack
WARNING	CLASS 1 LASER PRODUCT, IEC/EN 60825-1:2014 – Do not look into the ends of the fiber optic cable or SFP module while converters are powered.

## UACC-OM-SM-10G-S

Supported Media	Single-Mode Fiber
Connector Type	(1) LC
BiDi	Yes
TX Wavelength*	Blue Latch: 1270 nm Red Latch: 1330 nm <small>*It must be used in pairs (blue latch and red latch)</small>
RX Wavelength*	Blue Latch: 1270 nm Red Latch: 1330 nm <small>*It must be used in pairs (blue latch and red latch)</small>
Data Rate	10 Gbps
Max. Power Consumption	1W
Cable Distance	10 km
Operating Temperature	0 to 70° C (32 to 158° F)
Pack Options	2-pack, 20-pack

WARNING

CLASS 1 LASER PRODUCT, IEC/EN 60825-1:2014 – Do not look into the ends of the fiber optic cable or SFP module while converters are powered.

## UACC-OM-SM-1G-S

Supported Media	Single-Mode Fiber
Connector Type	(1) LC
BiDi	Yes
TX Wavelength*	Blue Latch: 1310 nm Yellow Latch: 1550 nm <small>*It must be used in pairs (blue latch and yellow latch)</small>
RX Wavelength*	Blue Latch: 1550 nm Yellow Latch: 1310 nm <small>*It must be used in pairs (blue latch and yellow latch)</small>
Data Rate	1.25 Gbps
Max. Power Consumption	0.66W
Cable Distance	3 km
Operating Temperature	0 to 70° C (32 to 158° F)
Pack Options	2-pack, 20-pack

WARNING

CLASS 1 LASER PRODUCT, IEC/EN 60825-1:2014 – Do not look into the ends of the fiber optic cable or SFP module while converters are powered.



Specifications are subject to change. Ubiquiti products are sold with a limited warranty described at [www.ui.com/support/warranty](http://www.ui.com/support/warranty)

©2021 Ubiquiti Inc. All rights reserved. Ubiquiti, Ubiquiti Networks, the Ubiquiti U logo, the Ubiquiti beam logo, UniFi, and UniFi Network are trademarks or registered trademarks of Ubiquiti Inc. in the United States and in other countries. All other trademarks are the property of their respective owners.