

# UniFi® | SWITCH

Managed Gigabit Switches with SFP

Models: US-24, US-48

Non-Blocking Throughput Switching Performance

Gigabit Ethernet RJ45 Ports

SFP+/SFP Fiber Connectivity Options



# UniFi® SWITCH

## Overview

Build and expand your network with Ubiquiti Networks® UniFi® Switch, part of the UniFi line of products.

Available with 24 or 48 RJ45 Gigabit ports, the UniFi Switch is a fully managed Gigabit switch, delivering robust performance and intelligent switching for your growing networks.

## Switching Performance

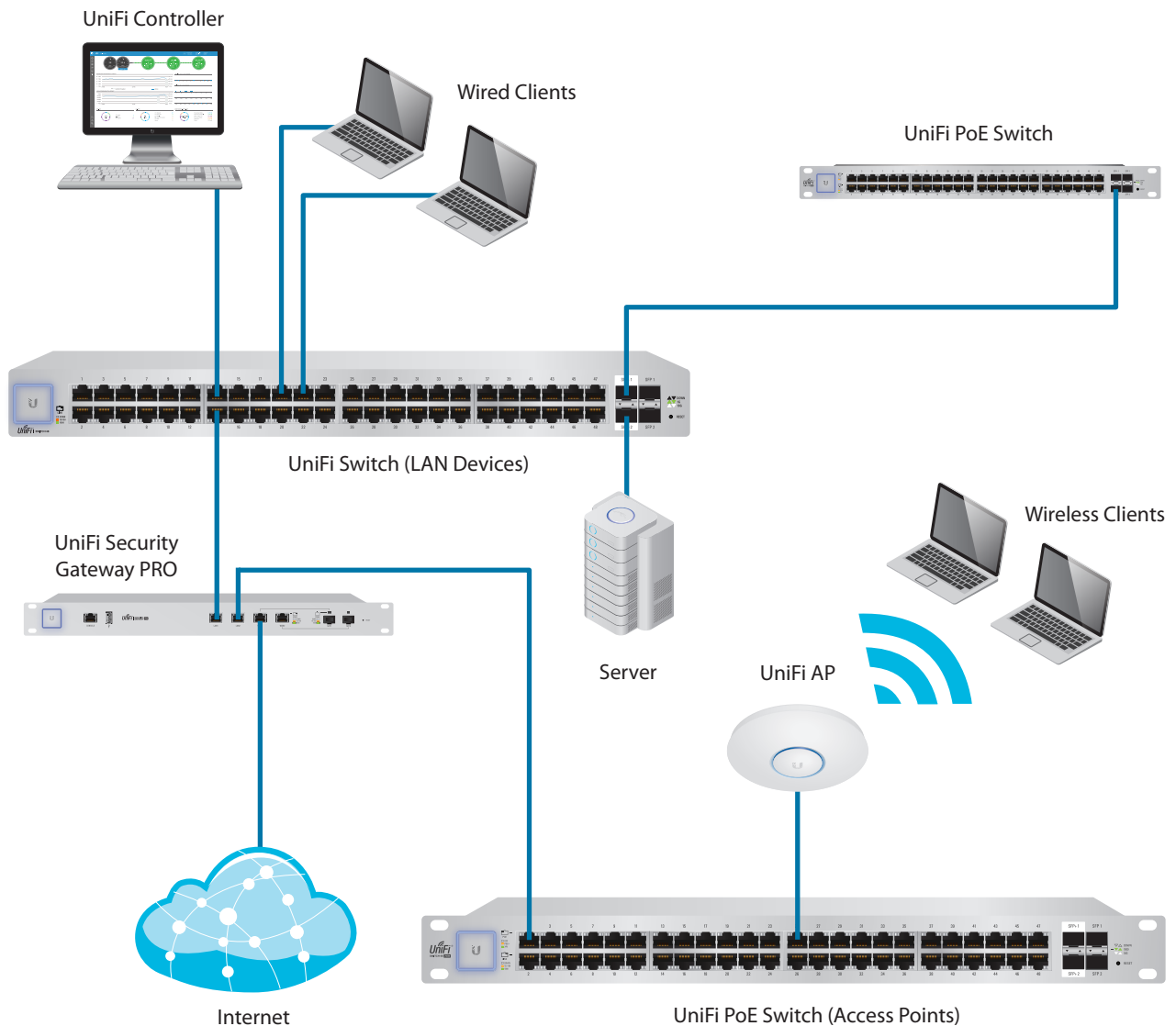
The UniFi Switch offers the forwarding capacity to simultaneously process traffic on all ports at line rate without any packet loss.

For its total, non-blocking throughput, the 24-port model supports up to 26 Gbps, while the 48-port model supports up to 70 Gbps.

## Fiber Connectivity

Each model includes two SFP ports for uplinks of up to 1 Gbps.

The 48-port model adds two SFP+ ports for high-capacity uplinks of up to 10 Gbps, so you can directly connect to a high-performance storage server or deploy a long-distance uplink to another switch.



# UniFi Controller

Designed for convenient management, the UniFi Controller software allows admins to configure and monitor the UniFi Switch and other UniFi devices using a graphical user interface. You can download it from [www.ubnt.com](http://www.ubnt.com) at no extra charge – there is no separate software, licensing, or support fee.

## Multi-Site Management

A single instance of the UniFi Controller running in the cloud can manage multiple UniFi sites within a centralized interface. Each site is logically separated and has its own network monitoring, configuration, maps, statistics, and admin accounts.

## Switch Configuration

You can access any managed UniFi Switch through the UniFi Controller to configure a variety of features:

- Operation mode (switching, mirroring, or aggregate) per port
- Network/VLAN configuration
- Jumbo frame and flow control services
- Network settings
- Storm control setting per port
- Spanning tree configuration
- 802.1x control and RADIUS VLAN
- Debug terminal option for command-line interface

## Switch Port Status

You can also view status information for each port:

- Connection speed and duplex mode
- TX/RX data rates
- Network/VLAN setting



## Dashboard

The *Dashboard* tab provides a visual representation of your network's status. Basic information is provided for each network segment.

| DEVICE NAME           | IP ADDRESS    | STATUS       | MODEL                     | VERSION        | UPTIME         | ACTIONS        |
|-----------------------|---------------|--------------|---------------------------|----------------|----------------|----------------|
| Rack USG-Pro-4        | 192.168.1.1   | CONNECTED    | UniFi Security Gateway 4P | 4.3.11.4852827 | 36 55m 45s     | LOCATE RESTART |
| ABR- US-16-150W       | 192.168.1.233 | CONNECTED    | UniFi Switch 16 POE-150W  | 3.5.1.4088     | 100 18m 45m 7s | LOCATE RESTART |
| DownStairs US-48-500W | 192.168.1.191 | CONNECTED    | UniFi Switch 48 POE-500W  | 3.5.1.4088     | 46 21m 55m 13s | LOCATE RESTART |
| Workshop US-48        | 192.168.1.246 | CONNECTED    | UniFi Switch 48 POE       | 3.5.1.4088     | 34 21m 12m 13s | LOCATE RESTART |
| Rack US-48-750W       |               |              |                           | 3.5.1.4088     | 46 21m 55m 29s | LOCATE RESTART |
| Rack US-8-150W        |               |              |                           | 3.5.1.4088     | 16 8m 10m 17s  | LOCATE RESTART |
| AC-Broadcom           |               |              |                           | 3.5.1.4088     | 46 21m 53m 4s  | LOCATE RESTART |
| AC-LITE               |               |              |                           | 3.6.1.3553     | 36 21m 17m 32s | LOCATE RESTART |
| AC-LR-Baseament       |               |              |                           | 3.6.1.3553     | 46 21m 54m 6s  | LOCATE RESTART |
| 44e9e77020433         |               | DISCONNECTED |                           | 3.6.1.3553     | 36 21m 1m 32s  | LOCATE RESTART |
| 44e9e77020444         |               | DISCONNECTED |                           | 3.6.1.3553     | 36 19m 26m 8s  | LOCATE RESTART |
| AC-Pro-Baseament      |               |              |                           | 3.6.1.3553     | 46 21m 53m 31s | LOCATE RESTART |
| 44e9e779c4289         |               | DISCONNECTED |                           | 3.6.1.3553     | 96 17m 59m 44s | LOCATE RESTART |
| Protopipe1 UAP-AC-Pro |               |              |                           | 3.6.1.3553     | 16 8m 9m 12s   | LOCATE RESTART |
| AC-Pro-Crawspace      |               |              |                           | 3.6.1.3553     | 36 21m 17m 14s | LOCATE RESTART |
| Timeout               |               |              |                           | 3.5.1.4088     | 16 8m 9m 34s   | LOCATE RESTART |
| Living                |               |              |                           | 3.5.1.4088     | 16 8m 8m 36s   | LOCATE RESTART |
| Sitting               |               |              |                           | 3.5.1.4088     | 16 8m 8m 36s   | LOCATE RESTART |
| Master                |               |              |                           | 3.5.1.4088     | 16 8m 8m 18s   | LOCATE RESTART |
| Loft                  |               |              |                           | 3.5.1.4088     | 16 8m 8m 32s   | LOCATE RESTART |
| Baseament             |               |              |                           | 3.5.1.4088     | 16 8m 8m 25s   | LOCATE RESTART |
| 24e4c3e9421e9f        |               |              |                           | 3.5.1.4088     | 36 17m 22m 54s | LOCATE RESTART |
| Pro-coast2            | 192.168.1.164 | CONNECTED    | UniFi AP-Pro              | 3.5.1.4088     | 16 8m 20m 25s  | LOCATE RESTART |
| Pro-coast2            | 192.168.1.141 | CONNECTED    | UniFi AP-Pro              | 3.5.1.4088     | 36 21m 16m 49s | LOCATE RESTART |

## Device Configuration

The *Devices* screen displays the UniFi devices discovered by the UniFi Controller. You can access each managed device for device details and configuration.

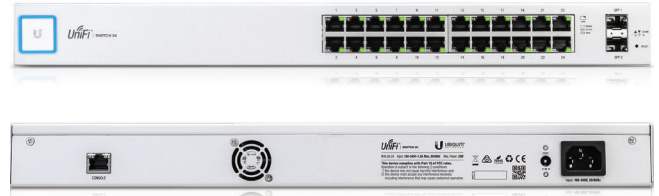


# Models

## UniFi® SWITCH 24

### Model: US-24

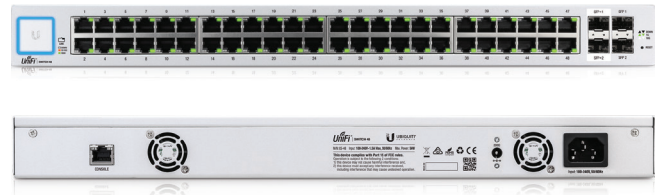
- (24) Gigabit RJ45 Ports
- (2) SFP Ports
- (1) Serial Console Port
- Non-Blocking Throughput: 26 Gbps
- Switching Capacity: 52 Gbps
- Forwarding Rate: 38.69 Mpps
- Maximum Power Consumption: 25W
- Rack-Mountable



## UniFi® SWITCH 48

### Model: US-48

- (48) Gigabit RJ45 Ports
- (2) SFP+ Ports
- (2) SFP Ports
- (1) Serial Console Port
- Non-Blocking Throughput: 70 Gbps
- Switching Capacity: 140 Gbps
- Forwarding Rate: 104.16 Mpps
- Maximum Power Consumption: 56W
- Rack-Mountable



### Model Comparison Chart

|                       | US-8-150W     | US-16-150W | US-24   | US-24-250W<br>US-24-500W | US-48    | US-48-500W<br>US-48-750W |
|-----------------------|---------------|------------|---------|--------------------------|----------|--------------------------|
| Gigabit RJ45 Ports    | 8             | 16         | 24      | 24                       | 48       | 48                       |
| SFP Ports             | 2             | 2          | 2       | 2                        | 2        | 2                        |
| SFP+ Ports            |               |            |         |                          | 2        | 2                        |
| 802.3af/at PoE+       | ✓             | ✓          |         | ✓                        |          | ✓                        |
| 24V Passive PoE       | ✓             | ✓          |         | ✓                        |          | ✓                        |
| Sound Level*<br>(dBr) | 0.5 (fanless) | 1.7-10.8   | 1.6-9.2 | 9.1-21.2<br>9.3-21.6     | 0.7-13.5 | 10.7-23.6<br>12.1-24.7   |

\* Background noise level: 27.5 dBA

# Hardware Specifications

| US-24                         |  |                              |
|-------------------------------|--|------------------------------|
| Dimensions                    | 443 x 43 x 221 mm (17.44 x 1.69 x 8.70")                                   |                              |
| Weight                        | Rack-Mount Brackets Excluded   | Rack-Mount Brackets Included |
|                               | 2.51 kg (5.53 lb)  | 2.60 kg (5.70 lb)            |
| Networking Interfaces         | (24) 10/100/1000 Mbps RJ45 Ethernet Ports<br>(2) 1 Gbps SFP Ethernet Ports |                              |
| Management Interface          | (1) RJ45 Serial Port Out-of-Band, Ethernet In-Band                         |                              |
| Total Non-Blocking Throughput | 26 Gbps  |                              |
| Switching Capacity            | 52 Gbps  |                              |
| Forwarding Rate               | 38.69 Mpps   |                              |
| Power Method                  | 100-240VAC/50-60 Hz, Universal Input                                       |                              |
| Power Supply                  | AC/DC, Internal, 25W DC  |                              |
| Max. Power Consumption        | 25W  |                              |
| LEDs per Port                 | Speed/Link/Activity  |                              |
| Sound Level*                  | Fan Level: 0   | Fan Level: 1                 |
|                               | 1.6 dBr  | 9.2 dBr                      |
| ESD/EMP Protection            | Air: ± 24 kV, Contact: ± 24 kV   |                              |
| Rack Mount                    | Yes, 1U High   |                              |
| Shock and Vibration           | ETSI300-019-1.4 Standard   |                              |
| Operating Temperature         | -5 to 40° C (23 to 104° F)   |                              |
| Operating Humidity            | 5 to 95% Noncondensing   |                              |
| Certifications                | CE, FCC, IC  |                              |

\* Background noise level: 27.5 dBa

# Hardware Specifications

| US-48                         |   |                              |
|-------------------------------|---|------------------------------|
| Dimensions                    | 443 x 43 x 286 mm (17.44 x 1.69 x 11.26")   |                              |
| Weight                        | Rack-Mount Brackets Excluded  | Rack-Mount Brackets Included |
|                               | 3.56 kg (7.85 lb)   | 3.65 kg (8.06 lb)            |
| Networking Interfaces         | (48) 10/100/1000 Mbps RJ45 Ethernet Ports<br>(2) 1/10 Gbps SFP+ Ethernet Ports<br>(2) 1 Gbps SFP Ethernet Ports |                              |
| Management Interface          | (1) RJ45 Serial Port Out-of-Band, Ethernet In-Band  |                              |
| Total Non-Blocking Throughput | 70 Gbps   |                              |
| Switching Capacity            | 140 Gbps  |                              |
| Forwarding Rate               | 104.16 Mpps   |                              |
| Power Method                  | 100-240VAC/50-60 Hz, Universal Input  |                              |
| Power Supply                  | AC/DC, Internal, 56W DC   |                              |
| Max. Power Consumption        | 56W   |                              |
| LEDs per Port                 | Speed/Link/Activity   |                              |
| Sound Level*                  | Fan Level: 0  | Fan Level: 1                 |
|                               | 0.7 dBr   | 13.5 dBr                     |
| ESD/EMP Protection            | Air: ± 24 kV, Contact: ± 24 kV  |                              |
| Rack Mount                    | Yes, 1U High  |                              |
| Shock and Vibration           | ETSI300-019-1.4 Standard  |                              |
| Operating Temperature         | -5 to 40° C (23 to 104° F)  |                              |
| Operating Humidity            | 5 to 95% Noncondensing  |                              |
| Certifications                | CE, FCC, IC   |                              |

\* Background noise level: 27.5 dBa