



10-Port Durable Switch with High-Power 802.3bt PoE++

Auto-Sensing IEEE 802.3af/at/bt PoE

Fanless Industrial-Grade Design

Plenum-Rated Form Factor



Overview

Expand and power your network with the UniFi® Industrial Switch, part of the Ubiquiti® UniFi Enterprise System. The USW-Industrial is a configurable Gigabit Layer 2 switch with auto-sensing, high-power 802.3bt PoE++.

Switching Performance

The USW-Industrial offers the forwarding capacity to simultaneously process traffic on all ports at line rate without any packet loss.

PoE++ Flexibility

The USW-Industrial features ten Gigabit RJ45 ports to deliver robust performance and intelligent switching for enterprise networks.

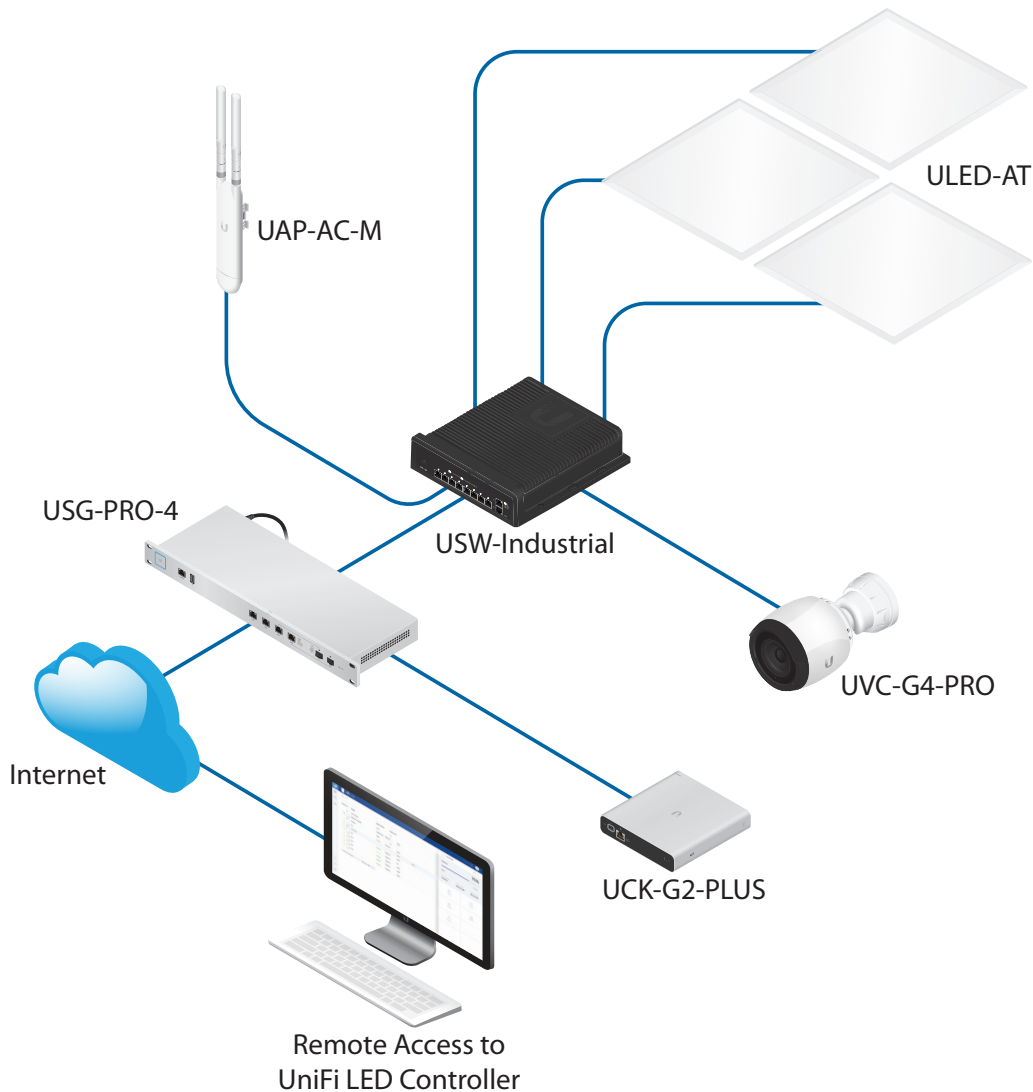
Eight of those ports offer 802.3bt PoE++ to provide up to 60W of power (per port) to your high-power PoE devices. Products requiring 802.3af or 802.3at PoE, such as UniFi LED Panels, are also supported.

Ruggedized Industrial Design

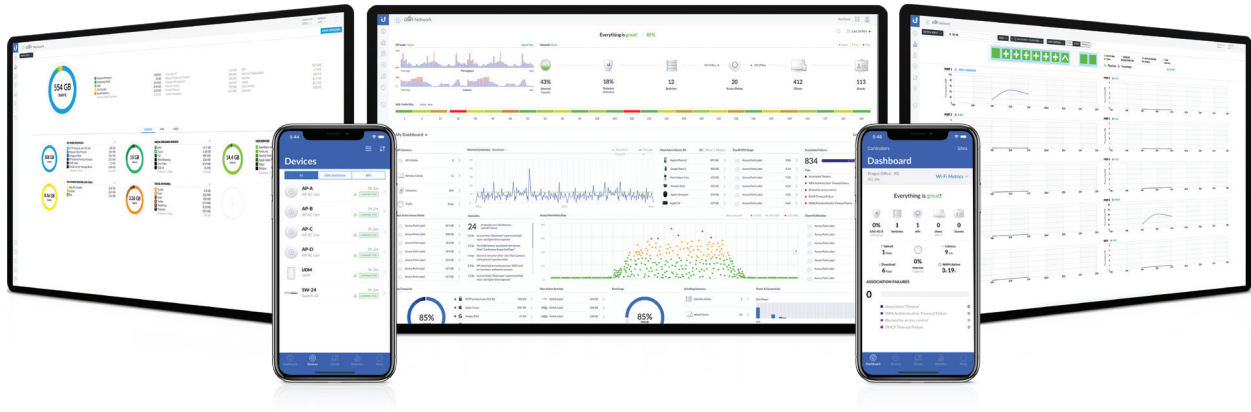
The fanless USW-Industrial is plenum-rated so it can be installed in a horizontal or vertical orientation in plenum spaces.

Its die-cast aluminum enclosure has a black, powder coated finish. This provides greater resistance to corrosion and durability in environments with extreme temperature variations.

Deployment Example



The USW-Industrial powers the UniFi AC Mesh AP, UniFi Cloud Key Gen2 Plus, UniFi Video Camera G4 Pro, and multiple UniFi LED Panels, which use 802.3at PoE+.



Scalable UniFi Network Controller

Management Capabilities

The UniFi Network Controller can provision UniFi devices, map out networks, and quickly manage system traffic. Important network details are logically organized for a simplified, yet powerful, interface.

Network Overview

From a single pane of glass, view network topology and configuration, real-time statistics, and debugging metrics. Monitor your network's vitals and make on-the-fly adjustments as needed.

Deep Packet Inspection

Ubiquiti's proprietary Deep Packet Inspection (DPI) engine includes the latest application identification signatures to track which applications (and IP addresses) are using the most bandwidth.

Detailed Analytics

The UniFi Network Controller provides configurable reporting and analytics to manage large user populations and expedite troubleshooting. Advanced search and sorting capabilities make network management more efficient.

Multi-Site Management

A single controller running in the cloud can manage multiple sites: multiple, distributed deployments and multi-tenancy for managed service providers. Each site is logically separated and has its own configuration, maps, statistics, guest portal, and administrator accounts.

Switch Configuration

You can access any managed UniFi Switch through the UniFi Controller to configure a variety of features:

- Operation mode (switching, mirroring, or aggregate) per port
- Network/VLAN configuration
- Jumbo frame and flow control services
- Network settings
- Storm control setting per port
- Spanning tree configuration
- 802.1x control and RADIUS VLAN
- Debug terminal option for command-line interface

Switch Port Status

You can also view status information for each port:

- Connection speed and duplex mode
- TX/RX data rates
- Network/VLAN setting

Software Features

The UniFi Network Controller software offers the following features:

- Centralized configuration management (including configuration cloning)
- Auto-MDIX automatically adjusts as needed for straight through or crossover cable
- 802.1X (RADIUS) authentication and dynamic VLAN



USW-Industrial	
Dimensions	254 x 235 x 60 mm (10 x 9.25 x 2.36")
Weight	3.85 kg (8.49 lb)
Enclosure Characteristics	Die-Cast Aluminum (ADC12) with Black Powder Coated Finish
Interfaces	(8) 10/100/1000 802.3bt PoE RJ45 Ports
Networking	(2) 10/100/1000 RJ45 Ports
Management	Ethernet In-Band
Total Non-Blocking Throughput	10 Gbps
Switching Capacity	20 Gbps
Forwarding Rate	14.88 Mpps
Power Method	100 - 240 VAC, 50/60 Hz Universal Input
Power Supply	AC/DC, Internal, 450W DC
Supported Voltage Range	AC Input: 100 to 240VAC, Max. 6A
Max. Power Consumption (Excluding PoE Output)	20W
LEDs	Status
System	PoE, Speed/Link/Activity
RJ45 Ports	
ESD/EMP Protection	Air: ± 24 kV, Contact: ± 24 kV
Shock and Vibration	ETSI300-019-1.4 Standard
Operating Temperature	
Internal AC/DC @ 450W	-40 to 50° C (-40 to 122° F)
Internal AC/DC @ 240W	-40 to 60° C (-40 to 140° F)
Operating Humidity	5 to 95% Noncondensing
Certifications	FCC, IC



PoE	
PoE Interfaces	PoE++ IEEE 802.3bt (Pair A 1, 2+; 3, 6-) (Pair B 4, 5+; 7, 8-)
Max. PoE Wattage per Port by PSE	802.3bt 60W
Voltage Range 802.3 PoE Mode	50-57V
Max. Total PoE Power Budget	430W

Specifications are subject to change. Ubiquiti products are sold with a limited warranty described at: ui.com/support/warranty

The limited warranty requires the use of arbitration to resolve disputes on an individual basis, and, where applicable, specify arbitration instead of jury trials or class actions.

©2019 Ubiquiti Inc. All rights reserved. Ubiquiti, Ubiquiti Networks, the Ubiquiti U logo, the Ubiquiti beam logo, and UniFi are trademarks or registered trademarks of Ubiquiti Inc. in the United States and in other countries. Apple and the Apple logo are trademarks of Apple Inc., registered in the U.S. and other countries. App Store is a service mark of Apple, Inc., registered in the U.S. and other countries. Android, Google, Google Play, the Google Play logo and other marks are trademarks of Google LLC. All other trademarks are the property of their respective owners.

